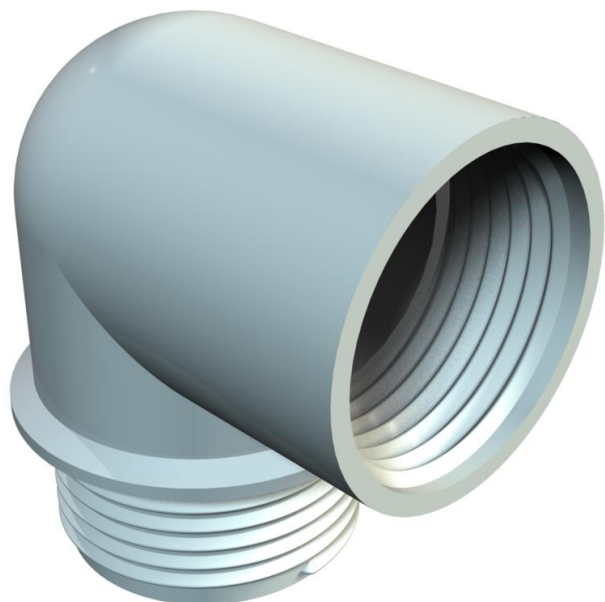


Technical data sheet

90° elbow socket, PG thread

Item number: 2029944



Elbow socket with PG internal and external thread to DIN 40430.

The elbow socket can be turned into an angular gland with two steel pressure rings 107/D, a sealing ring 107/A or 107/B and a pressure screw 107/E.



PA Polyamide

Master data

Item number	2029944
Type	107 W PG16 PA
Description 1	Elbow socket
Manufacturer	OBO
Dimension	PG16
Colour	Light grey
Material	Polyamide
Smallest sales unit	10
Unit of quantity	Piece
Weight	0.95 kg
Weight unit	kg/100 pc.

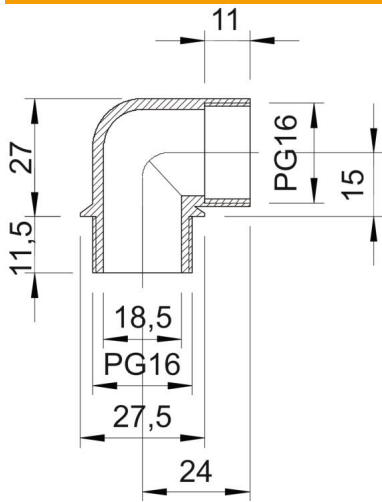
Technical data sheet

90° elbow socket, PG thread



Item number: 2029944

Dimensions



Dimension A	24 mm
Dimension B	15 mm
Dimension D1	27.5 mm
Dimension D2	18.5 mm
Dimension L1	11.5 mm
Dimension L2	11 mm
Dimension L3	27 mm

Technical data

Type	with thread
Flame-resistant	acc. to VDE 0471/DIN 695 Part 2-1, test temperature 650°C
Thread	Pg 16
Thread dimension, PG, external	16
Thread dimension, PG, internal	16
Permitted temperature range, max.	65 °C
Permitted temperature range, min.	-20 °C