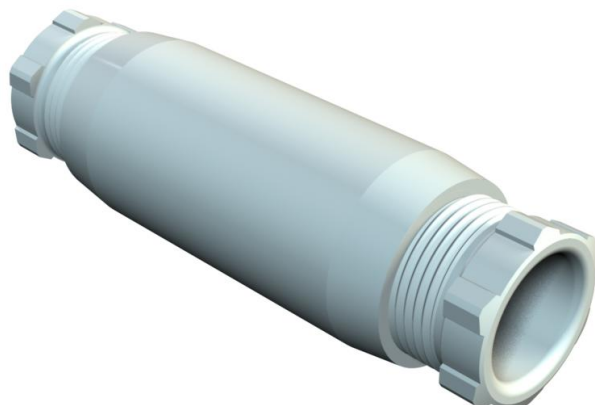


# Technical data sheet

## Cable connection sleeve

Item number: 2022060



Protection rating IP54, nominal voltage 660 V. VDE specifications state that connection sleeves are only intended for local routing.  
117/2.5 VDE / PG 16: nominal cross-section 2.5 mm<sup>2</sup>, with 5-pole terminal insert 2.5 mm<sup>2</sup> and cable entries with strain relief for cable diameter 9–14 mm.  
117/6 VDE / PG 21: nominal cross-section 6 mm<sup>2</sup>, with 5-pole terminal insert 6 mm<sup>2</sup> and cable entries with strain relief for cable diameter 12–18 mm.

117/6 VDE: Nennquerschnitt mm<sup>2</sup>, mit 5poligem Klemmeinsatz 6 mm<sup>2</sup> und Kabeleinführungen mit Zugentlastung Pg 21 für Kabeldurchmesser 12-18 mm  
5-pole terminal insert 6 mm<sup>2</sup>



**PS** Polystyrene

### Master data

Item number	2022060
Type	117 5x6
Description 1	Cable connection sleeve
Manufacturer	OBO
Dimension	6mm2
Colour	Light grey; RAL 7035
Material	Polystyrene
Smallest sales unit	5
Unit of quantity	Piece
Weight	8.306 kg
Weight unit	kg/100 pc.

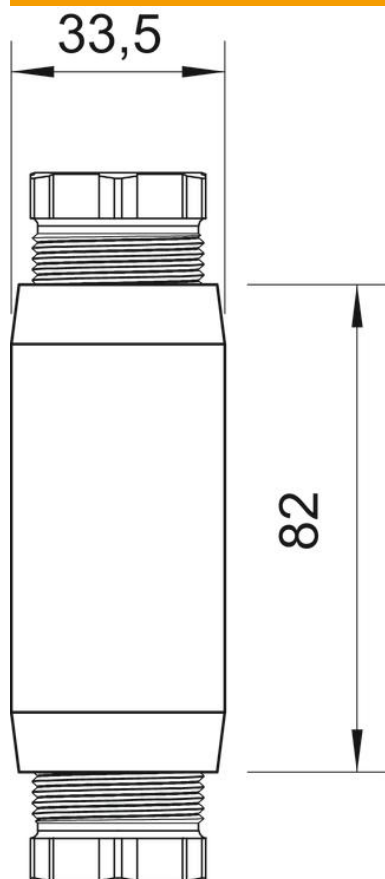
# Technical data sheet

## Cable connection sleeve

Item number: 2022060



### Dimensions



Dimension D	33.5 mm
Dimension L	82 mm

### Technical data

Entries	Pg 21
Halogen-free	yes
Nominal voltage	660 V
Impact-resistant	yes
Protection rating	IP54