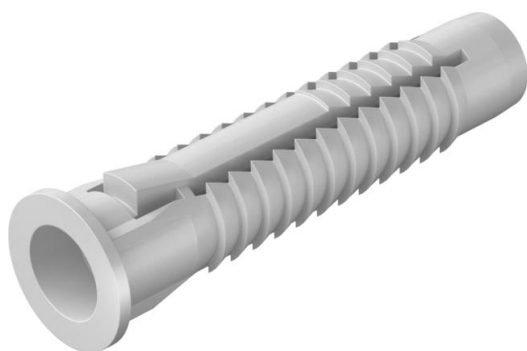


Technical data sheet

Universal anchor

Item number: 2347588



Also suitable as a cavity anchor, with collars to prevent slipping. 3 tabs take up the torque.
Required minimum bolt length = anchor length + component thickness + 1 x bolt \varnothing .
Withdrawal force applies to wood screws of the largest bolt diameter in concrete of class B25.
Our safety value recommendation: 5x

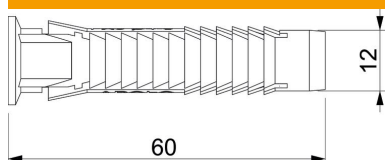


PE Polyethylene

Master data

Item number	2347588
Type	910 FX 12x60
Description 1	Universal anchor
Available from	01.05.2020
Manufacturer	OBO
Dimension	12x60
Colour	Light grey
Material	Polyethylene
Smallest sales unit	25
Unit of quantity	Piece
Weight	0.4 kg
Weight unit	kg/100 pc.

Dimensions



Length	60 mm
Dimension D	12 mm
Dimension L	60 mm

Technical data sheet

Universal anchor

Item number: 2347588



Technical data

Version for	Universal anchor
Pull-out value	1910 N
Concrete Frat	1910
Drill hole diameter, min.	12 mm
Suitable for fastening with cable ties	no
Suitable for gas concrete	no
Suitable for hexagonal wood screw	yes
Hollow brick Hlz12 Frat	500
Wood screws	8-10
Porous calcareous sandstone KSL12 Fempf.	740
Solid calcareous sandstone KSL12 Frat	1100
With edge	yes
With bolts	no
Porous concrete P2 Fempf.	280
Porous concrete P4 Fempf.	400
Full brick Mz12 Frat	1100