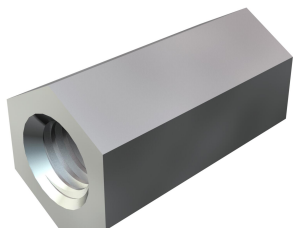


# Technical data sheet

## Spacer sleeve

Item number: 3415066



Continuous internal thread.

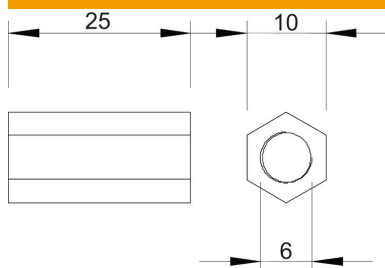
CE

- Zn** Die-cast zinc
- G** Electrogalvanized

### Master data

Item number	3415066
Type	965 M6X25 G
Description 1	Spacer sleeve
Manufacturer	OBO
Dimension	M6x25mm
Material	Die-cast zinc
Surface	Electrogalvanized
Surface standard	EN ISO 19598 / EN ISO 4042
Smallest sales unit	100
Unit of quantity	Piece
Weight	0.96 kg
Weight unit	kg/100 pc.

### Dimensions



Length	25 mm
Dimension 1, metric	6
Dimension 2, metric	6
Dimension L	25 mm

# Technical data sheet

## Spacer sleeve

Item number: 3415066



### Technical data

Continuous thread	yes
Shape	Hexagonal
Thread	M6
WAF	10
Hexagonal	yes