

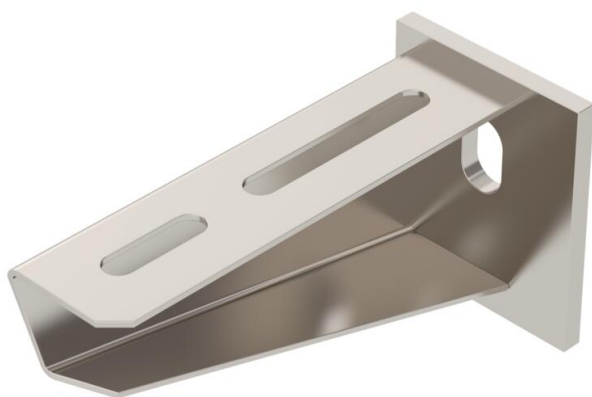
# Technical data sheet

## Wall and support bracket AW 30 A5

Item number: 6443632



Medium-duty wall and support bracket with welded head plate.  
Fastening of the bracket to the U support of width 400 mm or greater using a hexagonal bolt through both sides of the support. Please insert suitable spacers.



**A5** Stainless steel

### Master data

Item number	6443632
Type	AW 30 21 VA4529
Description 1	Wall and support bracket
Description 2	with welded head plate
Manufacturer	OBO
Dimension	B210mm
Material	Stainless steel
Smallest sales unit	1
Unit of quantity	Piece
Weight	37.5 kg
Weight unit	kg/100 pc.

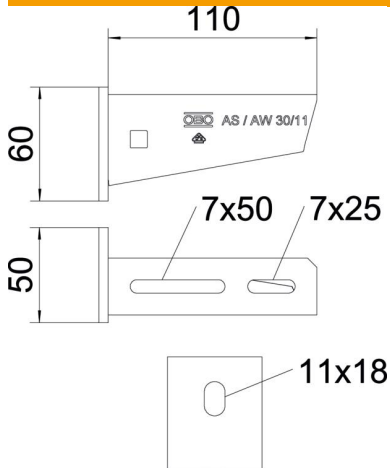
# Technical data sheet

## Wall and support bracket AW 30 A5



Item number: 6443632

### Dimensions

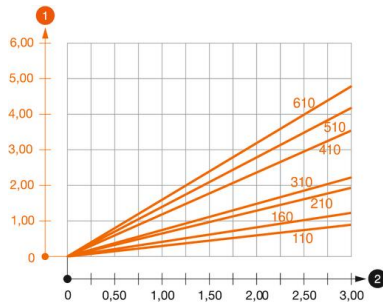


Length	50 mm
Width	210 mm
Height	70 mm
Dimension A	50 mm
Dimension H	70 mm

### Technical data

Version for	Wall and support bracket
F in kN	3 kN
Maintain electrical functions	no
Hole diameter	13 mm
Rustproof steel, pickled	no
Angle range, max.	90 mm
Angle range, min.	90 mm

### Loads



#### Load diagram, bracket, type AW 30

- 1 Bending of the bracket tip at permitted bracket load
- 2 Permitted bracket load in kN without man load
- Load curve with bracket lengths in mm

# Technical data sheet

## Wall and support bracket AW 30 A5

Item number: 6443632



### Characteristic anchor load values for wall and support bracket AW 30

Bracket load F kN	Max. total load F in kN					
	Bracket length in mm					
	100	200	300	400	500	600
3.57	1.66	1.12	0.99	0.76	0.74	0.74
4.76	2.21	1.50	1.32	1.01	0.99	0.99

Max. total load F = cable weight + cable tray + bracket. The load capacity values increase considerably when used in uncracked concrete. The values given are based on concrete of strength class C20/25. Observe the installation conditions of the DIBt approval (anchors).