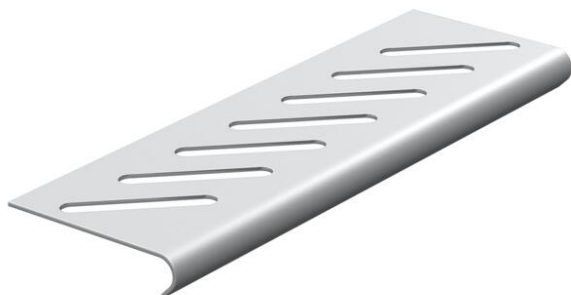


# Technical data sheet

## Bottom end plate A2

Item number: 7084013



For base reinforcement at the ends of the tray and as cable protection.  
For fastening, please order screws, type FRSB M6x12, separately.



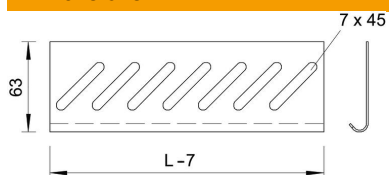
**A2** Stainless steel

**2B** Bright, treated

### Master data

Item number	7084013
Type	BEB 100 A2
Description 1	Bottom end plate
Description 2	for cable tray
Manufacturer	OBO
Dimension	B100mm
Material	Stainless steel
Surface	Bright, treated
Surface standard	
Smallest sales unit	1
Unit of quantity	Piece
Weight	4.599 kg
Weight unit	kg/100 pc.

### Dimensions



Width	100 mm
Height	35 mm
Dimension B	100 mm

### Technical data

Maintain electrical functions	no
Rustproof steel, pickled	no
Wide-span version	no