

Technical data sheet

T branch hood

Item number: 7216613



Fitting hood to cover three BSKM 0711 duct ends running towards each other in a T shape. Including glued-in seals for closing the joints and loose seals when combining with lock plate; screws for equipotential bonding also included.



St Steel

L Painted

Master data

Item number	7216613
Type	BSKM-TA 0711RW
Description 1	T-branch
Description 2	for wall and ceiling mounting
Manufacturer	OBO
Dimension	70x110
Colour	Pure white; RAL 9010
Material	Steel
Surface	Painted
Surface standard	
Smallest sales unit	1
Unit of quantity	Piece
Weight	110.8 kg
Weight unit	kg/100 pc.

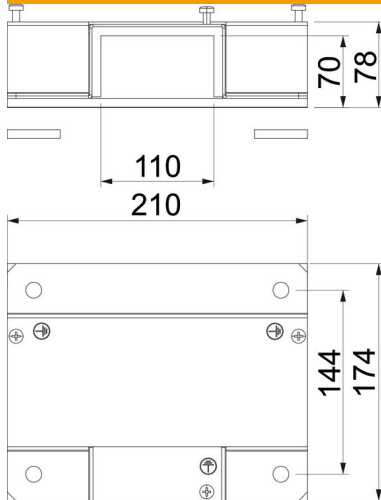
Technical data sheet

T branch hood

Item number: 7216613



Dimensions



Width	174 mm
Height	78 mm
Dimension A	174 mm
Dimension B	110 mm
Dimension b	110 mm
Dimension d	144 mm
Dimension d min.	210 mm
Dimension h	70 mm
Dimension H	70 mm
Dimension t	78 mm

Technical data

Number of flammable sides	3
Fire resistance class I - installation duct	120
With perforation	no
Partitions possible	no
Jacketing	Steel
Material of the insulation	Miscellaneous