

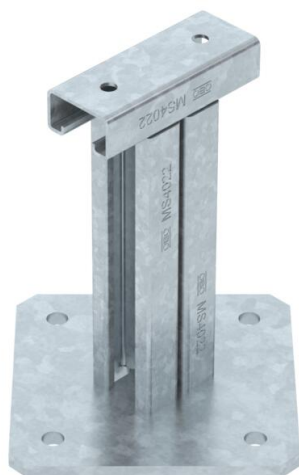
Technical data sheet

Floor support 190 for BKRS, FT

Item number: 6044501



Floor support in T form, with unperforated profile rail. For holding up walkable cable trays, type BKRS. Height 190 mm.



CE

St Steel

FT Hot-dip galvanised

Master data

Item number	6044501
Type	BSS 190 100 FT
Description 1	Floor support, symmetrical
Description 2	for walkable cable trays
Manufacturer	OBO
Dimension	190x100
Material	Steel
Surface	Hot-dip galvanised
Surface standard	DIN EN ISO 1461
Smallest sales unit	1
Unit of quantity	Piece
Weight	178.9 kg
Weight unit	kg/100 pc.

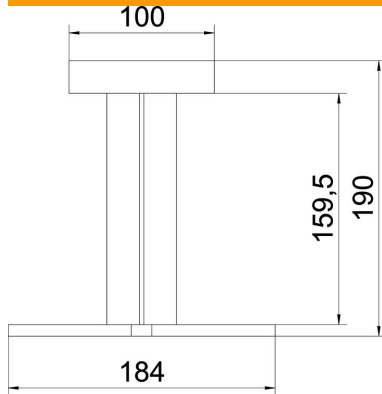
Technical data sheet

Floor support 190 for BKRS, FT

Item number: 6044501



Dimensions



Length	198 mm
Width	100 mm
Height	190 mm
Dimension B	100 mm
Dimension b1	190 mm
Dimension b2	159.5 mm

Technical data

Version for	Miscellaneous
Suitable for mesh cable tray	no
Suitable for cable ladder	no
Suitable for cable tray	yes
Suitable for cable support system width, max.	100 mm
Suitable for cable support system width, min.	100 mm
Suitable for tray/ladder width	100 mm
Tray fastening	Screw-on
Rustproof steel, pickled	no