

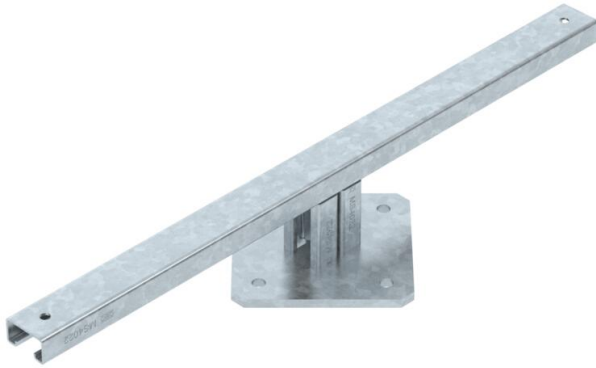
Technical data sheet

Floor support 90 for BKRS, FT

Item number: 6044481



Floor support in T form, with unperforated profile rail. For holding up walkable cable trays, type BKRS. Height 90 mm.



St

Steel

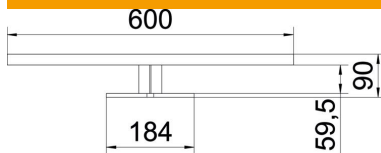
FT

Hot-dip galvanised

Master data

Item number	6044481
Type	BSS 90 600 FT
Description 1	Floor support, symmetrical
Description 2	for walkable cable trays
Manufacturer	OBO
Dimension	90x600
Material	Steel
Surface	Hot-dip galvanised
Surface standard	DIN EN ISO 1461
Smallest sales unit	1
Unit of quantity	Piece
Weight	244.3 kg
Weight unit	kg/100 pc.

Dimensions



Length	198 mm
Width	600 mm
Height	90 mm
Dimension B	600 mm
Dimension b1	90 mm
Dimension b2	59.5 mm

Technical data sheet

Floor support 90 for BKRS, FT

Item number: 6044481



Technical data

Version for	Miscellaneous
Suitable for mesh cable tray	no
Suitable for cable ladder	no
Suitable for cable tray	yes
Suitable for cable support system width, max.	600 mm
Suitable for cable support system width, min.	600 mm
Suitable for tray/ladder width	600 mm
Tray fastening	Screw-on
Rustproof steel, pickled	no