

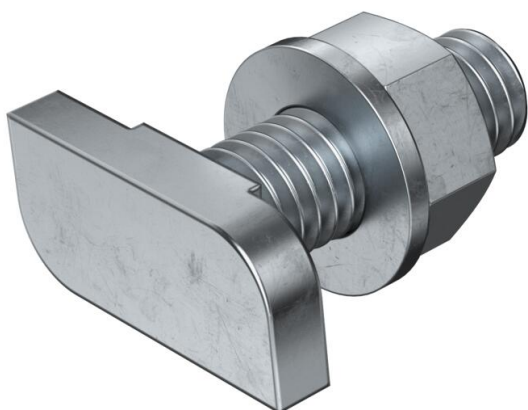
# Technical data sheet

## Hammer-head bolt

Item number: 1148024



Hammer-head bolt for use with CL2712 profile rail



**St** Steel

**ZL** Zinc slat

### Master data

Item number	1148024
Type	CL27HB M6x25 ZL
Description 1	Hammerhead screw
Description 2	for profile rail CL2712
Manufacturer	OBO
Dimension	M6x25mm
Material	Steel
Surface	Zinc slat
Surface standard	
Smallest sales unit	50
Unit of quantity	Piece
Weight	1.57 kg
Weight unit	kg/100 pc.

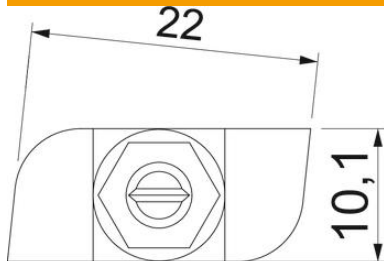
# Technical data sheet

## Hammer-head bolt

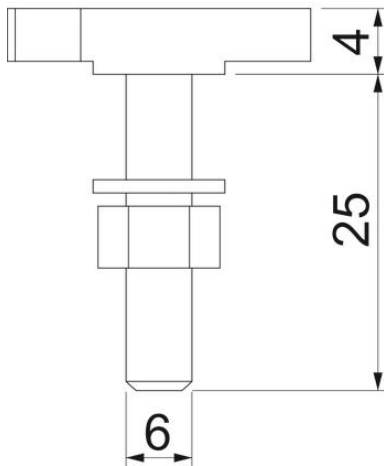
Item number: 1148024



### Dimensions



Length	23 mm
Width	10,1 mm
Height	4 mm



### Technical data

Suitable for mounting rail	yes
Thread	M 6 x 25mm
Thread metric	6