

# Technical data sheet

## Stand-off bracket FS

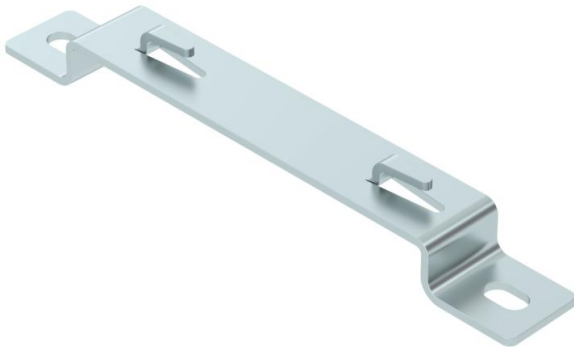
Item number: 6015658



Stand-off bracket for stand-off of mesh cable trays on the floor or on the wall.

GRM mesh cable tray types with side heights of 35, 55 and 105 mm can be mounted onto the stand-off bracket.

Screwless fastening of the mesh cable tray on the stand-off bracket.



**St** Steel

**FS** Strip galvanized

### Master data

|                     |                     |
|---------------------|---------------------|
| Item number         | 6015658             |
| Type                | DBLG 20 150 FS      |
| Description 1       | Stand-off bracket   |
| Description 2       | for mesh cable tray |
| Manufacturer        | OBO                 |
| Dimension           | B150mm              |
| Material            | Steel               |
| Surface             | Strip galvanized    |
| Surface standard    | DIN EN 10346        |
| Smallest sales unit | 20                  |
| Unit of quantity    | Piece               |
| Weight              | 17.4 kg             |
| Weight unit         | kg/100 pc.          |

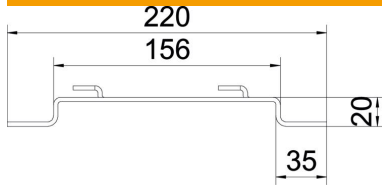
# Technical data sheet

## Stand-off bracket FS

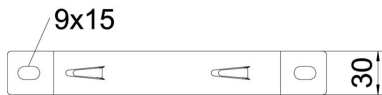
Item number: 6015658



### Dimensions



|             |         |
|-------------|---------|
| Height      | 20 mm   |
| Height      | 0.79 in |
| Dimension A | 30 mm   |
| Dimension B | 156 mm  |
| Dimension L | 220 mm  |



### Technical data

|                              |   |
|------------------------------|---|
| Version for                  | Wall/ceiling clamp, trapezoidal profile |
| Suitable for mesh cable tray | yes                                     |
| Suitable for cable ladder    | no                                      |
| Suitable for cable tray      | no                                      |
| Tray fastening               | Retaining lug                           |