

Technical data sheet

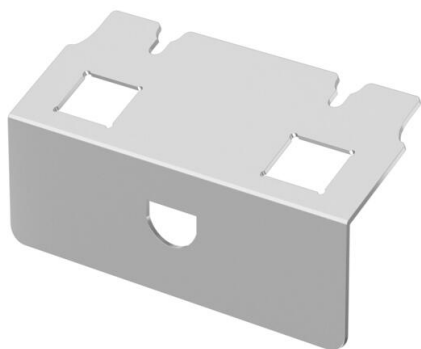
UDHOME2 data technology support type C

Item number: 7368474



Mounting support to accommodate two data connection modules of type C:
Brand-Rex: shielded; EKU: E-Stone; Dätwyler: KS-T, MS-K and KU-T; R&M:
Snap-In and Keystone; Rutenbeck: UM and UMflex; SETEC: MKJ, UKJ and XKJ;
Siemon TERA; Telegärtner: AMJ and UMJ.

Dimensions of a mounting opening in mm: 19.30 x 14.80.



A2 Stainless steel

Master data

Item number	7368474
Type	DT UH2 C
Description 1	Data technology support
Description 2	for UDHOME2 type C
Manufacturer	OBO
Material	Stainless steel
Smallest sales unit	1
Unit of quantity	Piece
Weight	9.3 kg
Weight unit	kg/100 pc.

Technical data sheet

UDHOME2 data technology support type C

Item number: 7368474



Technical data

Number of installable devices	2
Fastening type	Lockable
Labelling panel	no
Suitable for wet care	no
Device type	Data technology
Installation technology	Miscellaneous
Nominal size for device installation units	2
Standard	EN 50085-2-2
Heavy-duty version	no
Approvals	VDE