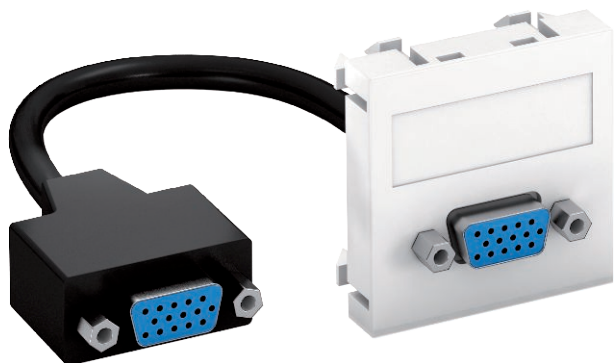


# Technical data sheet

VGA connection, 1 module, straight outlet, with connection cable

Item no. 6104658



Multimedia support with one VGA connection socket, straight cable outlet, with labelling panel, short VGA connection cable (HD15), socket-socket version. Support with locking fastening, suitable for horizontal and vertical installation in the system environment.

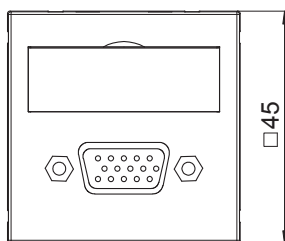
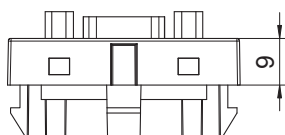
For installation in Rapid 45 device installation ducts, Rapid 80 device installation ducts, service poles and underfloor systems.

**PC** Polycarbonate

## Master data

|                          |                           |
|--------------------------|---------------------------|
| Item no.                 | 6104658                   |
| Type                     | MTG-VGA F RW1             |
| Description 1            | Multimedia support, VGA   |
| Description 2            | with cable, socket-socket |
| Dimension                | 45x45mm                   |
| Colour                   | Pure white                |
| RAL number               | 9010                      |
| Material                 | Polycarbonate             |
| Material symbol          | PC                        |
| Smallest sales unit (VG) | 1 Piece                   |
| Weight                   | 5,20 kg/100 pc.           |

## Technical data



|                      |  |
|----------------------|--|
| Width                | 45,00 mm                               |
| Height               | 45,00 mm                               |
| Depth                | 9,00 mm                                |
| Dimension            | 45 x 45 mm                             |
| Surface version      | Matt                                   |
| Number of units      | 1                                      |
| Fastening type       | Lock                                   |
| Labelling panel      | With labelling panel                   |
| Halogen-free         | <input checked="" type="checkbox"/>    |
| Hinged cover         | <input type="checkbox"/>               |
| Lamp-wire connector  | <input type="checkbox"/>               |
| With printed label   | <input type="checkbox"/>               |
| Mit Staubschutz      | <input type="checkbox"/>               |
| Protection rating    | IP20                                   |
| Support ring         | <input type="checkbox"/>               |
| Transparent          | <input type="checkbox"/>               |
| Use                  | VGA                                    |
| Strain relief option | <input type="checkbox"/>               |
| Combination          | Basic element with central cover plate |