

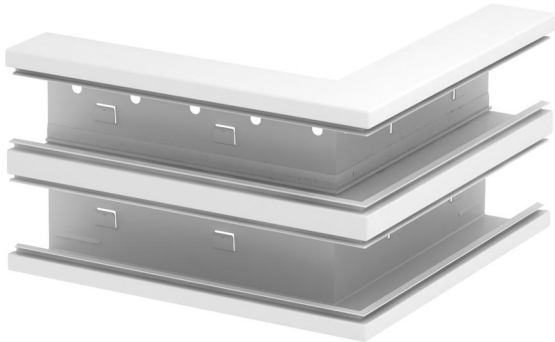
Technical data sheet

External corner, symmetrical, double, for device installation
trunking Rapid 80 type GS-S70210

Item number: 6278410



External corner for changing the direction of the GS device installation trunking.

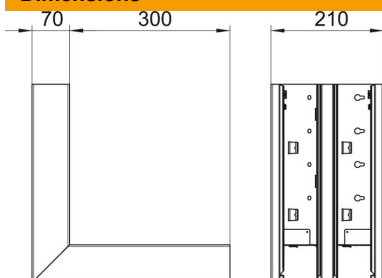


St Steel

Master data

Item number	6278410
Type	GS-DA70210RW
Description 1	External corner
Description 2	symmetrical
Manufacturer	OBO
Dimension	70x210x300
Colour	Pure white; RAL 9010
Material	Steel
Smallest sales unit	1
Unit of quantity	Piece
Weight	394 kg
Weight unit	kg/100 pc.

Dimensions



Length	300 mm
Width	210 mm
Height	70 mm

Technical data sheet

External corner, symmetrical, double, for device installation
trunking Rapid 80 type GS-S70210

Item number: 6278410



Technical data

Number of covers	2
Version for	Base
for duct width	210 mm
for trunking height	70 mm
Halogen-free	yes
Cable retaining clip	no
Duct connector	no
Cover mounting type	Internal
Mounting perforation in base	yes
Cover width	76.5 mm
Cover width 2	76.5 mm
Protection rating	IP30
Protective film	yes
Protection rating IK code	IK10
Symmetrical	yes
Permitted temperature range, max.	60 °C
Permitted temperature range, min.	-25 °C
Angle range, min.	90 mm