

# Technical data sheet

## Adapter plate KA-AW 30

Item number: 6346715



Adapter plate with slots for universal fastening to vertical steel girders and walls. The bracket types AW 30, AW 55 and AW 80 can be screwed to the adapter plate.

Please order the hexagonal bolt for bracket mounting (type SKS 12 x 40 GF) separately.



**St** Steel

**FT** Hot-dip galvanised

### Master data

Item number	6346715
Type	KA-AW 30 FT
Description 1	Adapter plate
Description 2	for wall bracket
Manufacturer	OBO
Dimension	400x102
Material	Steel
Surface	Hot-dip galvanised
Surface standard	DIN EN ISO 1461
Smallest sales unit	1
Unit of quantity	Piece
Weight	247 kg
Weight unit	kg/100 pc.

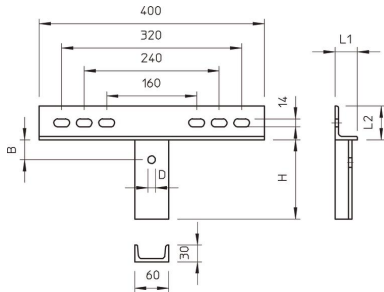
# Technical data sheet

## Adapter plate KA-AW 30

Item number: 6346715



### Dimensions



Length	40 mm
Width	400 mm
Height	140 mm
Dimension B	400 mm
Dimension H	140 mm
Dimension L	40 mm

### Adapter plate, bracket load

	Max. total load F in kN	
	KA-AW 30 with bracket:	
Anchor type	AW 30/11 - AW 30/61	AW 55/21 - AW 55/41
BZ 12-15-35/110	3.00	5.50

Max. total load F = cable weight + cable tray + bracket. The load capacity values increase considerably when used in uncracked concrete. Observe the load capacity of the brackets (diagram) and the installation conditions of the DIBt approval (anchors).