

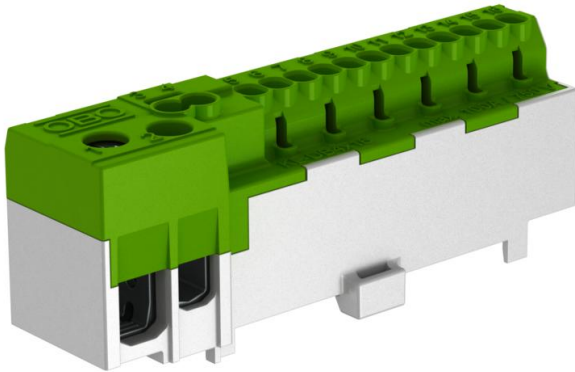
# Technical data sheet

## Protective conductor terminal, with screwless contacts, 12 terminals

Item number: 2016260



Neutral conductor connection terminal with 12 plug-in terminals, 2.5 mm<sup>2</sup> or 1.5 mm<sup>2</sup>, flexible with wire end sleeve; two plug-in terminals, 4 mm<sup>2</sup> and 2.5 mm<sup>2</sup>, flexible with wire end sleeve and two screw connection terminals up to 25 mm<sup>2</sup> or 16 mm<sup>2</sup>, flexible, 3 Nm. For snapping onto 15 mm hat rails according to DIN EN 60715 (formerly DIN EN 50022).



PA Polyamide

### Master data

Item number	2016260
Type	KL-DBS12x02GRGN
Description 1	Protective conductor terminal
Description 2	with plug contacts
Manufacturer	OBO
Dimension	12x2,5mm <sup>2</sup>
Colour	Grey / green
Material	Polyamide
Smallest sales unit	10
Unit of quantity	Piece
Weight	4.5 kg
Weight unit	kg/100 pc.

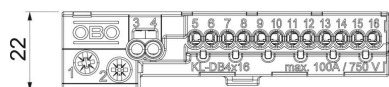
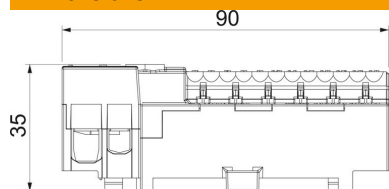
# Technical data sheet

Protective conductor terminal, with screwless contacts, 12 terminals

Item number: 2016260



## Dimensions



Length	85 mm
Height	20 mm

## Technical data

Closing plate required	no
No. of terminals	12
Explosion-tested version	no
Suitable for flexible conductors	yes
Suitable for solid conductors	no
Suitable for multi-wire conductors	no
Mounting type	Hat rail 15 mm
Nominal cross-section, max.	16 mm <sup>2</sup>
Nominal cross-section, min.	10 mm <sup>2</sup>
Pole number	12
Cross-section	12 terminals to 16 mm <sup>2</sup> mm <sup>2</sup>