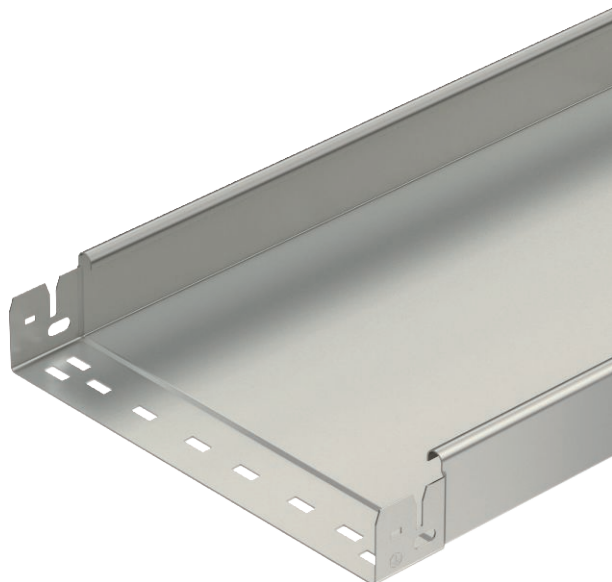


Technical data sheet

Cable tray SKS-Magic® 60, unperforated

Item no. 6059726



Unperforated cable tray with integrated quick fastening system. The usable length of the cable tray is 3,000 mm.

The continuous equipotential bonding is guaranteed without additional components.



VA Stainless steel, rustproof 1.4301

2B Bright, reworked

Master data

Item no.	6059726
Type	SKSMU 620 A2
Description 1	Cable tray SKSMU
Description 2	unperforated, quick connector
Manufacturer	OBO
Dimension	60x200x3050
Material	Stainless steel, material no. 1.4301
Material symbol	A2
Surface	Bright, reworked
Surface symbol	2B
Smallest sales unit (VG)	3 m
Weight	411,53 kg/100 m

Technical data



Usable cross-section	11.800,00 mm ²
Usable cross-section	118,00 cm ²
Suitable for maintaining electrical function	<input type="checkbox"/>
Connector version	Integrated connector
With cover	<input type="checkbox"/>
Mounting perforation in base	<input type="checkbox"/>
NATO hole pattern	<input type="checkbox"/>
Rustproof steel, pickled	<input type="checkbox"/>
Side perforation	<input type="checkbox"/>
Wide-span version	<input type="checkbox"/>

Technical data sheet

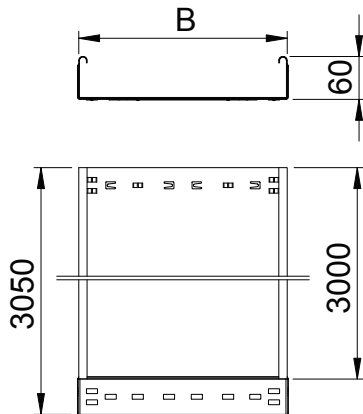
Cable tray SKS-Magic® 60, unperforated

Item no. 6059726



Technical data

Dimensions

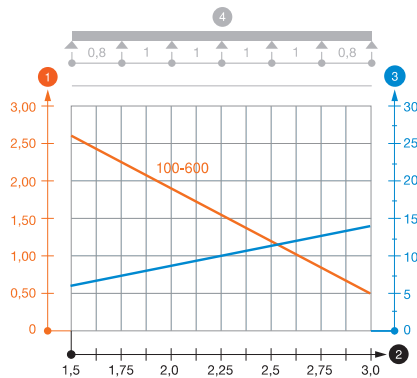


Length	3.050,00 mm
Width	200,00 mm
Height	60,00 mm
Side height	60,00 mm
Dimension B	200,00 mm
Plate thickness	1,50 mm

Appr. load:

Support spacing 1.5 m	2,60 kN/m
Support spacing 2.0 m	1,90 kN/m
Support spacing 2.5 m	1,10 kN/m
Support spacing 3.0 m	0,55 kN/m

Load diagram, cable tray, type SKSMU 60



- 1 Permitted cable tray/ladder load in kN/m without man load
- 2 Support width in m
- 3 Rail bend in mm at permitted kN/m
- 4 Load scheme during testing
- Load curve with cable tray/ladder width in mm
- Strut bend curve according to support width