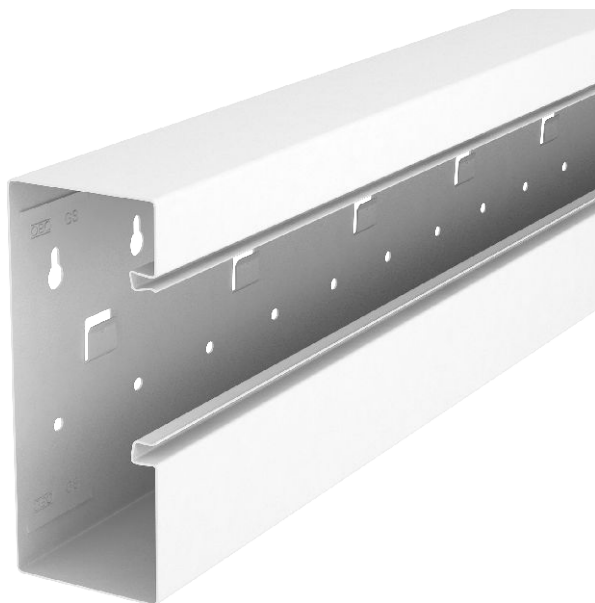


# Technical data sheet

Device installation trunking Rapid 80, trunking width 170, trunking height 70, asymmetrical  
Item no. 6277800



GS device installation trunking for mounting on the wall or on fastening panels. The GS device installation trunking possesses self-contacting locking straps to accept a sheet steel partition. The equipotential bonding between the trunking bases takes place using the trunking coupling. The protective measure and the equipotential bonding is guaranteed between the cover and the base by the self-contacting trunking cover. The real system opening is 76.5 mm. The cover must be ordered separately.

Overlengths up to 3,000 mm for trunking bases and covers as well as other RAL colours can be provided on request. The visible surfaces of the painted device installation trunking are laminated.

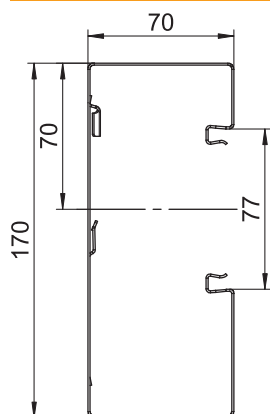


**St** Steel

## Master data

Item no.	6277800
Type	GS-A70170RW
Description 1	Device installation trunking
Description 2	asymmetrical
Dimension	70x170x2000
Colour	Pure white
RAL number	9010
Material	Steel
Material symbol	St
Smallest sales unit (VG)	2 m
Weight	352,00 kg/100 m

## Technical data



Length	2.000,00 mm
Width	170,00 mm
Height	70,00 mm
Number of covers	1
Number of insertable partitions	1
Rear panel version (inner side)	With locking lugs
Rectangular shape	<input checked="" type="checkbox"/>
Fastening type	Screw-on
Base perforation	with base perforation
Halogen-free	<input checked="" type="checkbox"/>
Cable retaining clip	<input type="checkbox"/>
Trunking height	70,00 mm
Trunking height	170,00 mm
Duct connector	<input type="checkbox"/>
Cover mounting type	Internal
Mounting perforation in base	<input checked="" type="checkbox"/>
Usable cross-section	100,10 cm <sup>2</sup>
Usable cross-section	10.010,00 mm <sup>2</sup>
Cover width	76,5 mm
Cover width 2	0,00 mm
Cover width 3	0,00 mm

# Technical data sheet

Device installation trunking Rapid 80, trunking width  
170, trunking height 70, asymmetrical  
Item no. 6277800



## Technical data

Cover supplied	<input type="checkbox"/>
Protective film	<input checked="" type="checkbox"/>
Symmetrical	<input type="checkbox"/>