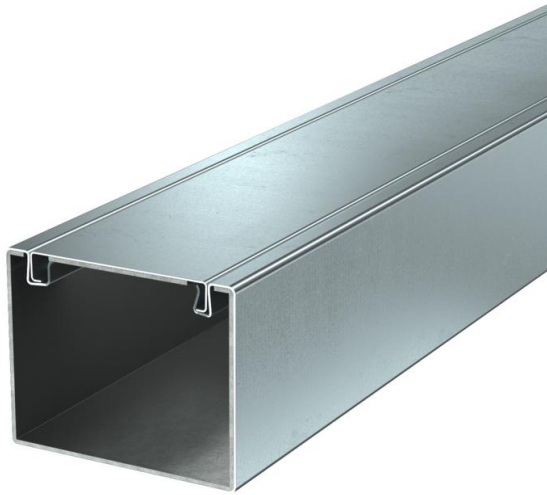


# Technical data sheet

Installation duct with PYROLINE® Rapid PLM fire protection mesh, duct height 80 mm, FS

Item number: 7218008



Metal installation duct with intumescent fire protection mesh for fireproof routing of cables. Classified as an installation duct EI30, EI60 and EI90 according to EN 13501-2, tested according to EN 1366-5. The duct prevents the fire spread for the classified period of time, offering protection against the effects of a cable fire.

Suitable for direct wall and ceiling mounting, mounting below system floors and on support systems. Tool-free joint mounting with PLM SI joint connector. Only approved pre-terminated fittings may be used. The cover is snapped on without tools, allowing rapid inspection and retroassignment. Offset cover mounting for continuous equipotential bonding of the entire duct section.



**St** Steel

**FS** Strip galvanized

## Master data

Item number	7218008
Type	PLM D 0810 FS
Description 1	Installation duct metal
Description 2	with fire protection mesh
Manufacturer	OBO
Dimension	80x100x2000
Material	Steel
Surface	Strip galvanized
Surface standard	DIN EN 10346
Smallest sales unit	2
Unit of quantity	Metre
Weight	379.5 kg
Weight unit	kg/100 m

## Dimensions

Length	2,000 mm
Width	100 mm
Height	80 mm
Dimension B	100 mm
Dimension H	80 mm
Dimension i	62 mm

# Technical data sheet

Installation duct with PYROLINE® Rapid PLM fire protection mesh, duct height 80 mm, FS

Item number: 7218008



## Technical data

Number of flammable sides	4
Cover fastening	Miscellaneous
Classification EI – installation duct	90
With perforation	yes
Usable cross-section	5180 mm <sup>2</sup>
Partitions possible	yes
Jacketing	Steel
Internal height	74 mm
Internal width	94 mm
maximum specific impedance Z1	2 mΩ/m