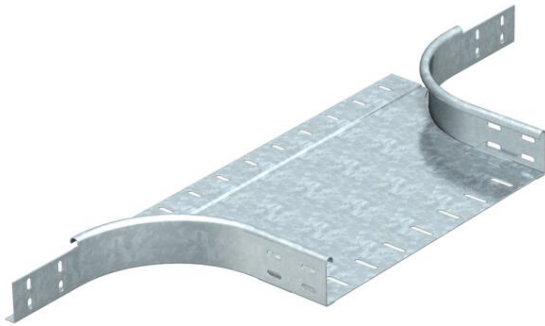


Technical data sheet

Add-on tee 60 FT SOMY

Item number: 7196188



Add-on tee for horizontal and vertical use. For all cable tray types of 60 mm side height.
Fitting in round design. The interior radius of the fitting is 150 mm. Fastening materials should be ordered separately.



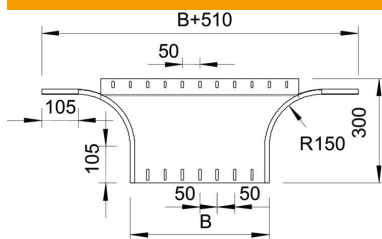
St Steel

FT SO Hot-dip galvanised 85 µm

Master data

Item number	7196188
Type	RAA 640 FT SO
Description 1	Add-on tee
Description 2	round version
Manufacturer	OBO
Dimension	60x400
Material	Steel
Surface	Hot-dip galvanised 85 µm
Surface standard	DIN EN ISO 1461
Smallest sales unit	1
Unit of quantity	Piece
Weight	240 kg
Weight unit	kg/100 pc.

Dimensions



Width	400 mm
Height	60 mm
Dimension B	400 mm

Technical data sheet

Add-on tee 60 FT SOMY

Item number: 7196188



Technical data

Bend (angle)	90°
Connector version	Integrated connector
Maintain electrical functions	no
NATO hole pattern	no
Change of direction	Horizontal
Rustproof steel, pickled	no
Wide-span version	no
Type of connector, cable support system	Screwed