

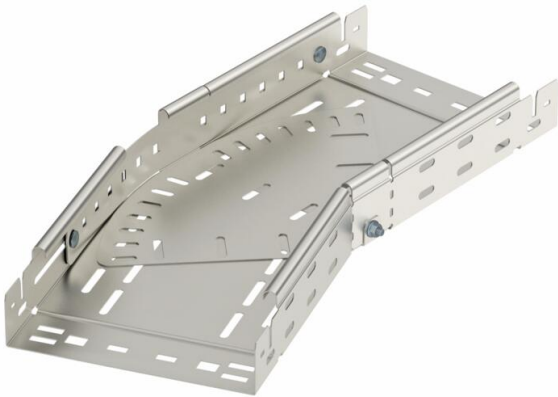
Technical data sheet

Magic bend, variable 60 A2

Item number: 6040520



Magic bend 0°–90°, variable, with quick connector system. For all cable tray types of 60 mm side height.



A2 Stainless steel

2B Bright, treated

Master data

Item number	6040520
Type	RBMV 610 A2
Description 1	Variable bend
Description 2	with quick connector
Manufacturer	OBO
Dimension	60x100
Material	Stainless steel
Surface	Bright, treated
Surface standard	
Smallest sales unit	1
Unit of quantity	Piece
Weight	76.4 kg
Weight unit	kg/100 pc.

Dimensions

Width	100 mm
Height	60 mm
Plate thickness	1 mm
Dimension B	100 mm
Dimension L	340 mm

Technical data sheet

Magic bend, variable 60 A2

Item number: 6040520



Technical data

Bend (angle)	Adjustable
Connector version	Integrated connector
Maintain electrical functions	no
Mounting perforation in base	yes
NATO hole pattern	no
Change of direction	Horizontal
Rustproof steel, pickled	no
Side perforation	yes
Wide-span version	no
Type of connector, cable support system	Click fastening