

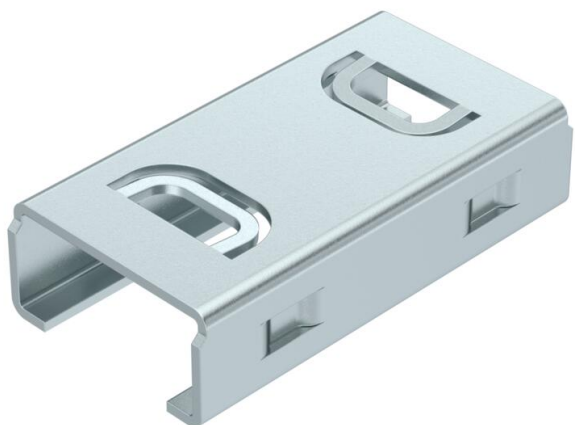
Technical data sheet

Traverse for Z support for BKRS

Item number: 6044423



Crossbar for Z-support to support walkable cable trays and prevent deflection with heavy cable loads.
Connection with Z-support by snapping into place. Mounting of cable tray on traverse with FKS M6 screw through hole in Z-support.



St Steel

FS Strip galvanized

Master data

Item number	6044423
Description 1	Traverse for Z-support
Description 2	for BKRS
Manufacturer	OBO
Dimension	45x87x22
Material	Steel
Surface	Strip galvanized
Surface standard	DIN EN 10346
Smallest sales unit	1
Unit of quantity	Piece
Weight	11.93 kg
Weight unit	kg/100 pc.

Technical data sheet

Traverse for Z support for BKRS

Item number: 6044423



Dimensions



Length	87 mm
Width	45 mm
Height	22 mm
Plate thickness	2 mm