

Technical data sheet

Floor box UDHOME4 with brush bar, brass, with FLF support, cover can be covered
Item number: 7427260

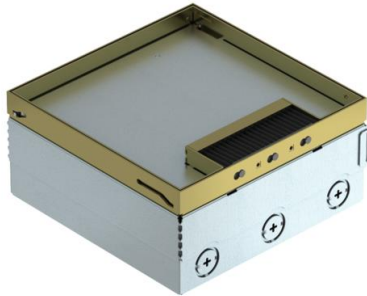


Square installation unit for use in dry-care cavity and screed floors for indoor use. Installation housing with pre-marked insertion openings for pipelines (M25). Cable outlet via brush bar in hinged lid. Cover adjustable to top edge of floor covering using four height adjustment supports. 15 mm floor covering recess in the hinged lid. The minimum installation depth is 95 mm, the height adjustment range + 30 mm.

The scope of delivery contains a mounting support for FLF devices.

Brush bar with black bristles and aluminium rail.

Surfaces visible in the floor covering made of: Brass.



CuZn
37 Brass

Master data

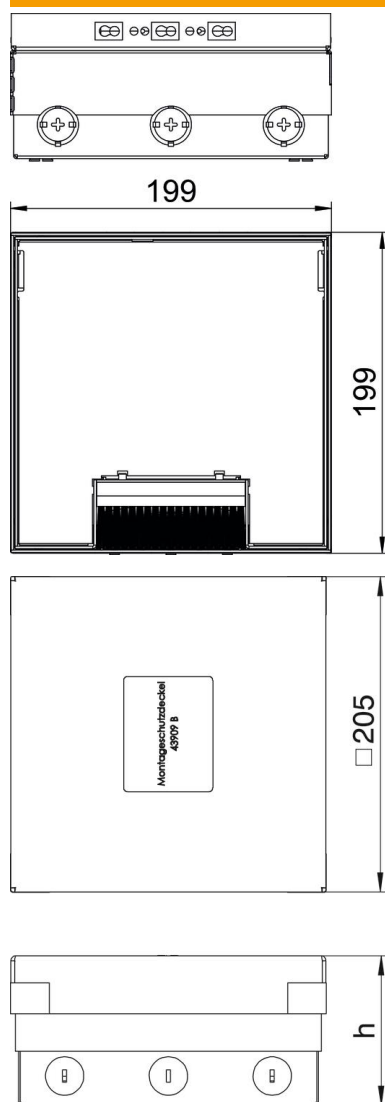
Item number	7427260
Type	UDHOME4 2M U PE
Description 1	Floor box, complete
Description 2	for FLF devices
Manufacturer	OBO
Material	Brass
Smallest sales unit	1
Unit of quantity	Piece
Weight	370.5 kg
Weight unit	kg/100 pc.

Technical data sheet

Floor box UDHOME4 with brush bar, brass, with FLF support, cover can be covered
Item number: 7427260



Dimensions



Length	202 mm
Width	202 mm

Technical data sheet

Floor box UDHOME4 with brush bar, brass, with FLF support, cover can be covered

Item number: 7427260



Technical data

Number of mounting boxes	2
Version for	Square
Cable outlet version	Brush bar
Equipment	FLF supports
Floor covering protection frame	no
Cover version	Floor covering recess
Screed height, max.	110 mm
Screed height, min.	95 mm
Floor height, max.	125 mm
Floor height, min.	95 mm
Suitable for raised floor installation	no
Suitable for cavity floor installation	yes
Suitable for wet care	no
Suitable for underfloor ducts	no
Length of external dimensions	199 mm
Length of installation dimensions	202 mm
With floor covering recess	yes
Height-adjustment range, max.	125 mm
Height-adjustment range, min.	95 mm
Protection rating (IP) when used	IP20
Protection rating (IP) when unused	IP40
Protection rating IK code	IK10
Floor covering thickness	15 mm