

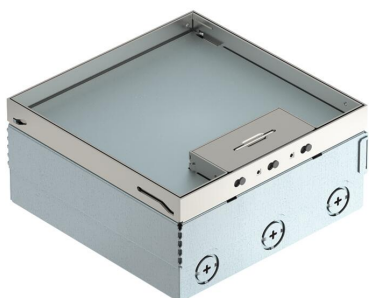
# Technical data sheet

## UDHOME4 floor box, freely equippable, stainless steel

Item number: 7427232



Square floor box for use in dry-cleaned cavity and screed floors in indoor areas. Installation housing with pre-marked insertion openings for pipes (M25). Empty housing for up to 2 UT3 universal supports for up to 6 Modul 45® devices. Cover adjustable to top edge of floor covering using four height-adjustment supports. The minimum installation depth is 95 mm, the height-adjustment range + 30 mm. Surfaces visible in the floor covering made of stainless steel.



A2 Stainless steel

### Master data

|                     |                     |
|---------------------|---------------------|
| Item number         | 7427232             |
| Type                | UDHOME4 2V          |
| Description 1       | Floor box, complete |
| Description 2       | empty               |
| Manufacturer        | OBO                 |
| Material            | Stainless steel     |
| Smallest sales unit | 1                   |
| Unit of quantity    | Piece               |
| Weight              | 384 kg              |
| Weight unit         | kg/100 pc.          |

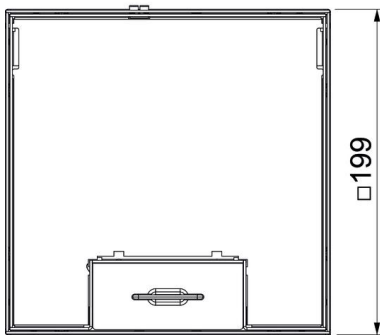
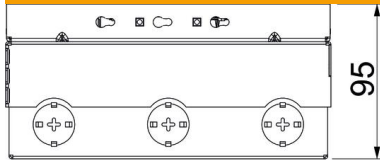
# Technical data sheet

## UDHOME4 floor box, freely equippable, stainless steel

Item number: 7427232



### Dimensions



|        |        |
|--------|--------|
| Length | 202 mm |
| Width  | 202 mm |

### Technical data

|  |                         |
|--|-------------------------|
| Number of mounting boxes               | 2                       |
| Version for                            | Square                  |
| Cable outlet version                   | Swivellable cord outlet |
| Equipment                              | Empty housing           |
| Floor covering protection frame        | no                      |
| Cover version                          | Floor covering recess   |
| Screed height, max.                    | 110 mm                  |
| Screed height, min.                    | 95 mm                   |
| Floor height, max.                     | 125 mm                  |
| Floor height, min.                     | 95 mm                   |
| Suitable for raised floor installation | no                      |
| Suitable for cavity floor installation | yes                     |
| Suitable for wet care                  | no                      |
| Suitable for underfloor ducts          | no                      |
| Length of external dimensions          | 199 mm                  |
| Length of installation dimensions      | 202 mm                  |
| With floor covering recess             | yes                     |
| Height-adjustment range, max.          | 125 mm                  |
| Height-adjustment range, min.          | 95 mm                   |
| Protection rating (IP) when used       | IP20                    |
| Protection rating (IP) when unused     | IP40                    |
| Protection rating IK code              | IK10                    |
| Opening mechanism                      | Handle                  |
| Floor covering thickness               | 15 mm                   |