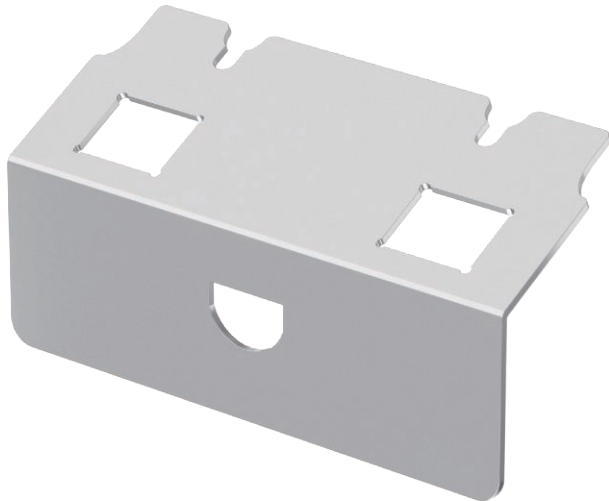


Technical data sheet

UDHOME2 data technology support type C



Item no. 7368474



Mounting support to accommodate two data connection modules of type C: Brand-Rex: shielded; EKU: E-Stone; Dätwyler: KS-T, MS-K and KU-T; R&M: Snap-In and Keystone; Rutenbeck: UM and UMflex; SETEC: MKJ, UKJ and XKJ; Siemon TERA; Telegärtner: AMJ and UMJ. Dimensions of a mounting opening in mm: 19.30 x 14.80.

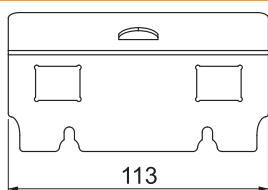
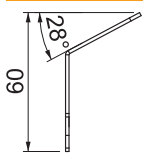


A2 Stainless steel, rustproof

Master data

Item no.	7368474
Type	DT UH2 C
Description 1	Data technology support
Description 2	for UDHOME2 type C
Material	Stainless steel, material A2
Material symbol	A2
Smallest sales unit (VG)	1 Piece
Weight	9,30 kg/100 pc.

Technical data



Number of installable devices	2
Fastening type	Lockable
Fastening type	Lockable
Labelling panel	<input type="checkbox"/>
Device type	Data technology
Suitable for wet care	<input type="checkbox"/>
Installation technology	Other
Nominal size for device installation units	2
Heavy-duty version	<input type="checkbox"/>