

# Technical data sheet

## Plastic wire sleeve

Item number: 3497866



The plastic wire sleeve is a supplement to the anchor rod or internal thread sleeve and is used to install components on masonry.

The plastic wire sleeve VM-SH 12x80 is mounted with the anchor rod VMU-A 8x110.

The plastic wire sleeve VM-SH 16x85 is mounted with the anchor rods VMU-A 10x130 and VMU-A 10x150 or the internal thread sleeve VMU-IG M6x80.

The plastic wire sleeve VM-SH 16x130 is mounted with the anchor rod VMU-A 10x150.

The plastic wire sleeve VM-SH 20x85 is mounted with the anchor rod VMU-A 12x155 or the internal thread sleeve VMU-IG M8x80 and VMU-IG M10x80.

**PA** Polyamide

### Master data

Item number	3497866
Type	VMU-SH 20x85
Description 1	Plastic perforated sleeve
Description 2	for solid + perforated bricks
Manufacturer	OBO
Colour	White
Material	Polyamide
Smallest sales unit	10
Unit of quantity	Piece
Weight	0.4 kg
Weight unit	kg/100 pc.

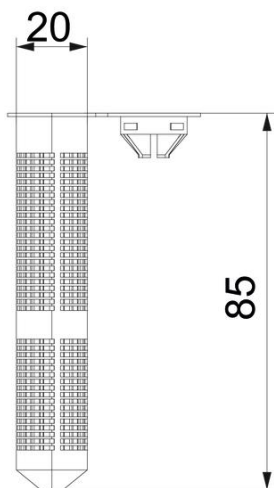
# Technical data sheet

## Plastic wire sleeve

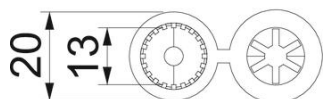
Item number: 3497866



### Dimensions



Length	85 mm
Dimension d	20 mm
Dimension L	85 mm



### Technical data

Version for	For pushing in
With flange	yes