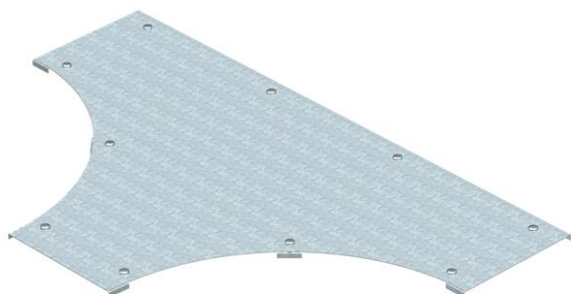


# Technical data sheet

## Cover for T branch piece DD



Item number: 6231691



Cover for wide span T branch piece with pre-mounted turn buckles.  
As the connector is mounted from the outside, the fitting cover is 300 mm shorter than the corresponding fitting. This must be considered when installing the track elements.



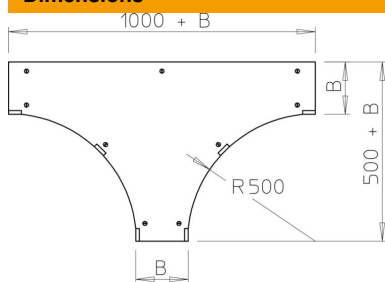
**St** Steel

**DD** Strip galvanised zinc/aluminium, Double Dip

### Master data

Item number	6231691
Type	WDTRL 500 DD
Description 1	Cover, T-branch piece
Description 2	wide span system 110 and 160
Manufacturer	OBO
Dimension	B500mm
Material	Steel
Surface	Strip galvanised zinc/aluminium, Double Dip
Surface standard	DIN EN 10346
Smallest sales unit	1
Unit of quantity	Piece
Weight	1419.2 kg
Weight unit	kg/100 pc.

### Dimensions



Width	500 mm
Plate thickness	1.25 mm
Dimension B	500 mm
Dimension H	15 mm

# Technical data sheet

## Cover for T branch piece DD

Item number: 6231691



### Technical data

Number of turn buckles	9 St.
Fastening type	Sash lock
Suitable for cable ladder	yes
Suitable for cable tray	yes
Material thickness	1.25 mm
Rustproof steel, pickled	no